



# ETC-550

TIRE CHANGER  
(WITH SWING ARM)

## INSTALLATION & OPERATION MANUAL

***READ THIS MANUAL BEFORE INSTALLING OR  
OPERATING YOUR LIFT***

REV 20150528.BR101 BD

**INSPECT YOUR LIFT UPON DELIVERY. NOTE ANY DAMAGE ON DELIVERY RECEIPT.**

## TABLE OF CONTENTS

INTRODUCTION.....	page 3
TRANSPORTATION.....	page 4
UNPACKING.....	page 4
SELECTING A LOCATION.....	page 5
COMPONENTS.....	page 6
ASSEMBLY.....	page 7
IMPORTANT SAFETY INSTRUCTIONS.....	page 8
OPERATION.....	page 9
Bead-Breaking.....	page 9
Clamping.....	page 10
Mount-Head (Adjustment & Positioning).....	page 11
Tire Removal.....	page 13
Tire Mounting.....	page 14
Tire Inflation.....	page 16
TROUBLE-SHOOTING.....	page 20
PARTS LIST.....	page 21
Chassis.....	page 21
Tower Assembly.....	page 22
Main Pedal Assembly.....	page 23
Turntable Assembly.....	page 24
Bead Breaker Assembly.....	page 25
Motor & Transmission.....	page 26
Inflation Pedal.....	page 26
Distributor Valve.....	page 27
WARRANTY INFORMATION.....	page 28



**Sales:** 1-888-207-3391

**Parts:** 1-800-535-0016

**En Español:** 1-877-221-1600

## **INTRODUCTION**

Thank you for your purchase.

Your machine is the result of decades of research, testing and development; and represents the most advanced technology on the market.

The care with which you maintain and operate your Tire Changer will directly affect its overall performance and longevity.



**PLEASE READ THIS ENTIRE MANUAL CAREFULLY AND COMPLETELY  
BEFORE OPERATING THE MACHINE.**



PLEASE **RECORD THE MODEL NUMBER AND THE SERIAL NUMBER** (LOCATED ON THE BACK OF YOUR MACHINE) HERE AND ON THE COVER OF THIS MANUAL FOR FUTURE REFERENCE.

Model Number: \_\_\_\_\_

Serial Number: \_\_\_\_\_

Manufacturing date: \_\_\_\_\_

**THIS INFORMATION WILL BE REQUIRED SHOULD YOU EVER NEED TO CALL IN FOR PARTS OR TECHNICAL ASSISTANCE.**

**For assistance, please call: 1-800-535-0016**

## TRANSPORTATION

This tire changer must be transported in its original packing and kept in the position shown on the package itself. The packed machine should be moved by means of a forklift truck of suitable capacity.

### SHIPPING AND DAMAGE CLAIMS

**INSPECT YOUR MACHINE UPON DELIVERY. NOTE ANY DAMAGE ON DELIVERY RECEIPT.**

When this equipment is shipped, title passes to the purchaser upon receipt from the carrier. Consequently, claims for the material damaged in shipment must be made by the purchaser against the transportation company at the time shipment is received.

## UNPACKING

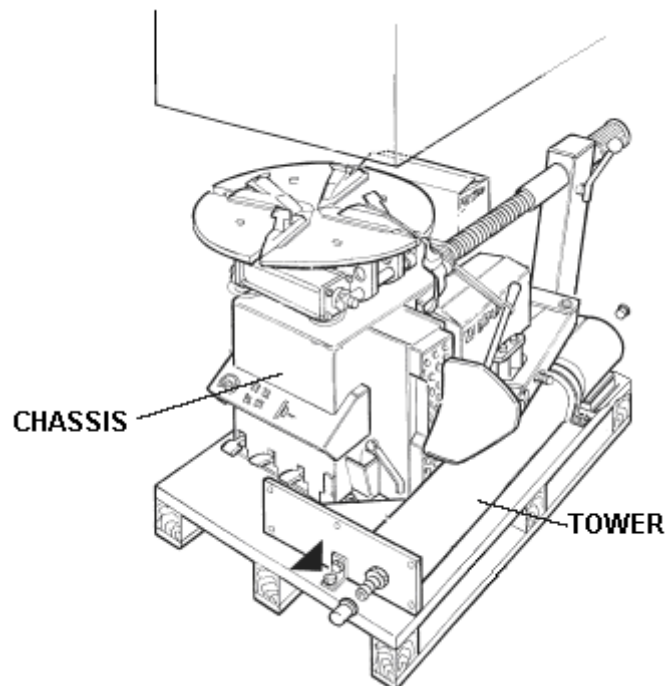


**WARNING** Failure to follow the Unpacking and Assembly Directions **WARNING** may impair the operation of this machine.

**Please read thoroughly.**



- 1] Carefully remove the crating and packaging materials from the machine. Check for any obvious shipping damage. (Remember to report any shipping damage to the carrier and make a notation on the delivery receipt.) Locate the bolts securing the machine to the wooden pallet.
- 2] The unit is composed of two main components: The Chassis and the Tower. (Fig. 1)
- 3] An Accessory Box is included with the Tire Changer, for smaller components.

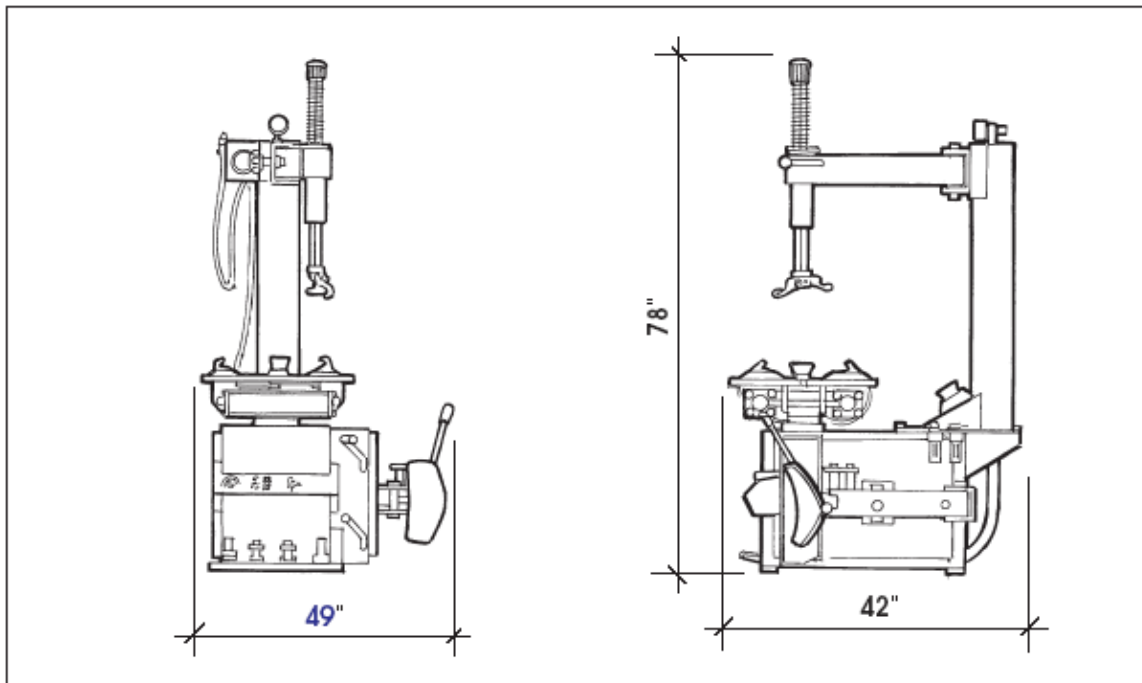


(Fig. 1)

## LOCATION

Your Tire Changer requires a 110v-120v electrical source and a 120-145/psi air supply. The closer these sources, the better. The machine should be plugged directly into a dedicated, grounded outlet. Do not use extension cords.

The area of operation should provide the minimum space shown in the illustrations below. (Fig. 2) There should be room enough to operate the machine in a safe manner and without restrictions. The area should be kept clean of oil, grease, brake lathe chips, etc. and clear of clutter. Avoid areas where customers or other bystanders may be present.



(Fig. 2)

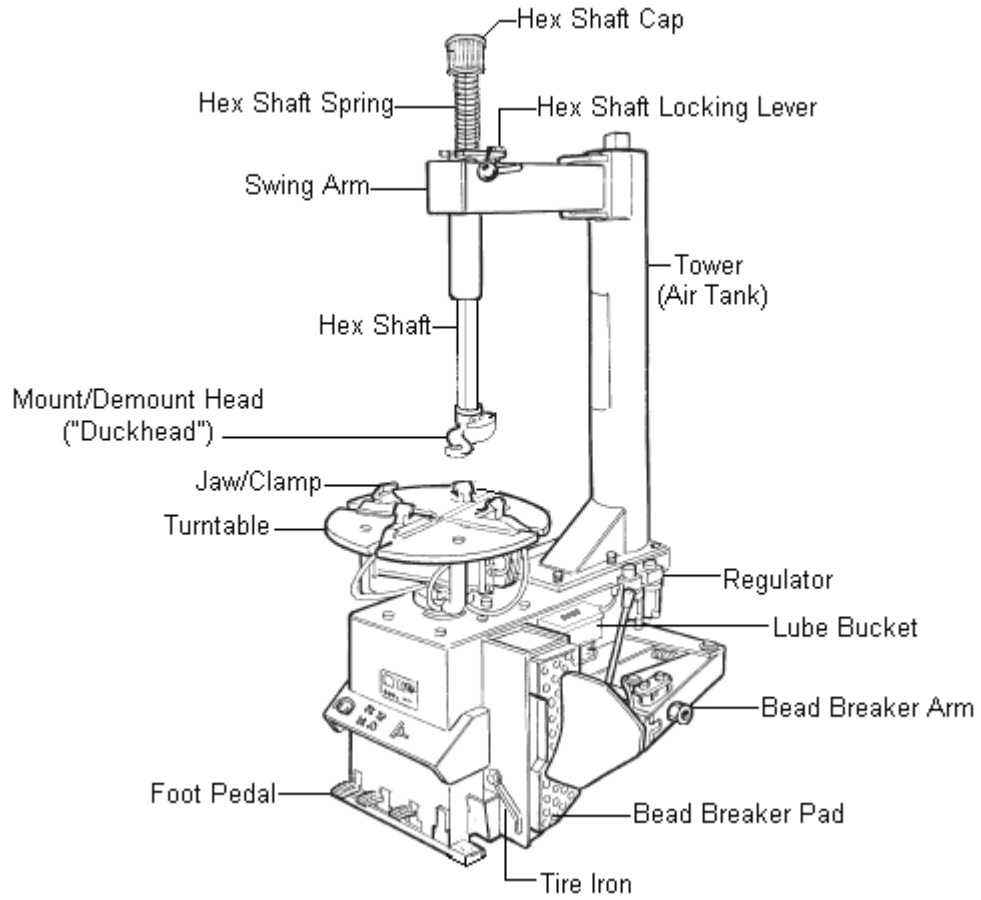
Once the desired location has been selected, unbolt the Tire Changer and carefully remove it from the shipping pallet.

Your machine is now ready for assembly.

## COMPONENTS



It is a good idea to familiarize yourself with the components of your machine and the terms describing them. (Fig. 3)

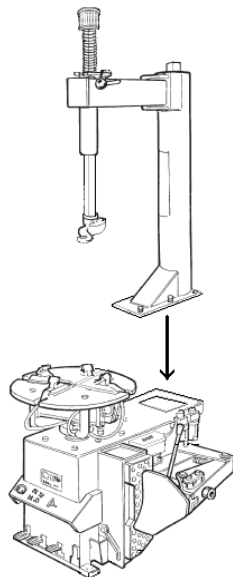


(Fig. 3)

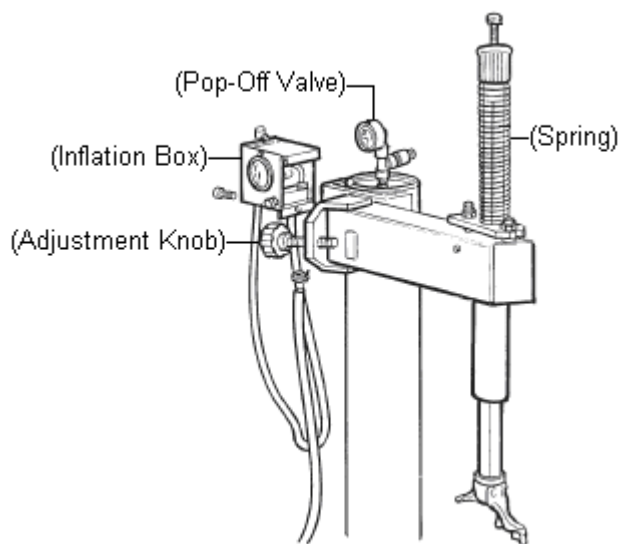
## ASSEMBLY

- 1] Set the Tower on the Chassis and fasten securely with the nuts and bolts provided. (Fig. 4)  
Remove side-panel and connect hoses to the connector(s) on the bottom of the Tower and Inflation Box as needed.
- 2] Raise Hex-Shaft and lock in place with the Locking Lever. Remove the Screw securing the Plastic Cap on the Hex Shaft. Remove hex shaft Spring from the accessory box and install on Hex Shaft as shown. Replace Plastic Cap and Screw. (Fig. 5)
- 3] Install Inflation Box on side of tower. (Fig. 5)
- 4] Install safety "pop-off" valve (Design and location may vary.). (Fig. 5)
- 5] Secure air hoses to the Tower and Inflation Box, as necessary. (Fig. 5)
- 6] Mount Regulator Assembly on side of Chassis, connecting the two hoses which feed inside the cabinet(see Fig. 3).
- 7] Install Soap-Box and Lube Brush on side of Chassis (see Fig. 3 & 6).

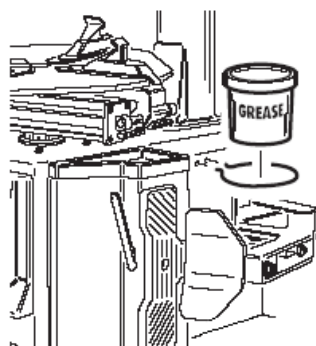
**(Note: The above procedure is a generic outline; specifics may vary. Your machine may arrive with some components already assembled, or slightly modified in design.)**



(Fig. 4)



(Fig. 5)



(Fig. 6)

## **IMPORTANT SAFETY INSTRUCTIONS**

**Read these Safety Instructions entirely!**  
**Read and understand all safety warning procedures before operating machine.**

- 1] **READ ALL WARNING LABELS** and instruction manual prior to operation of this machine. Failure to comply with proper safety instructions may lead to serious harm or even death of operator and/or bystanders.
- 2] Improper use of this machine may cause damage to machine or cause personal harm or injury.
- 3] **KEEP HANDS CLEAR** of all pinch points. Check machine for damaged parts prior to operation. **DO NOT USE MACHINE** if any part(s) are broken or damaged.
- 4] **NEVER EXCEED** factory recommendations for air pressure of tire. Over-inflating the tire beyond factory recommendations can cause the tire to burst or explode.
- 5] Operators should inspect all tires and rims for possible defects prior to mounting. **DO NOT ATTEMPT MOUNT DEFECTIVE TIRES. NEVER MOUNT A TIRE ON A DEFECTIVE WHEEL RIM.**
- 6] **ALWAYS MAKE SURE TIRE SIZE MATCHES RIM SIZE** prior to mounting. **MISMATCHED TIRE/RIM COMBINATIONS CAN EXPLODE.**
- 7] This machine is not intended to be a restraining device for exploding tires, tubes or rims. All operators should take proper precautions to implement safety and to avoid personal injury or harm.
- 8] **DO NOT** lean over table while inflating tire.
- 9] **KEEP HANDS AND BODY CLEAR** at all times and as far back as possible during inflation. An exploding tire, rim or other wheel component can cause death to operator and/or bystanders. **REMAIN CLEAR AT ALL TIMES.**
- 10] To inflate tires, use short bursts while carefully monitoring the pressure, tire, rim and bead.
- 11] While seating beads, **NEVER** exceed 40/psi. If bead does not seat at 40/psi, immediately relieve pressure and check for damaged bead and/or other cause.
- 12] **ALWAYS USE** good quality tire lubricant when servicing tires.
- 13] Consider work area environment. Do not expose equipment to rain. Never operate machine in or around water or damp environments. Keep area well lit, clean and clear of debris.
- 14] Only trained operators should operate this machine. All non-trained personnel should be kept away from work area. Never let non-trained personnel come in contact with or operate machine.
- 15] **DRESS PROPERLY.** Never wear loose gloves, clothing or jewelry. They can be caught in moving parts. Non-skid steel-toe footwear is recommended when operating this machine. Wear protective hair-covering to contain long hair. Approved back-support braces are recommended when handling heavy tires.
- 16] **ALWAYS WEAR SAFETY GOGGLES** when operating this machine.
- 17] Guard against electric shock. This machine must be grounded while in use to protect the operator from electric shock, and prevent damage to electrical components.
- 18] Always unplug machine from outlets and air-supply before servicing. Never yank cord to disconnect it from the receptacle. Never operate machine in or around water or damp environments.
- 19] **WARNING!** Risk of explosion. This equipment has internal arcing or sparking parts which should not be exposed to flammable vapors. This machine should not be located in a recessed area or below floor level.



**THIS SYMBOL POINTS OUT IMPORTANT SAFETY INSTRUCTIONS WHICH, IF NOT FOLLOWED, COULD ENDANGER THE PERSONAL SAFETY AND/OR PROPERTY OF YOURSELF AND OTHERS AND CAN CAUSE PERSONAL INJURY OR DEATH. READ AND FOLLOW ALL INSTRUCTIONS IN THIS MANUAL BEFORE ATTEMPTING TO OPERATE THIS MACHINE.**



## OPERATION



**WARNING Intended Use: This Semi-Automatic Tire Changing Machine** **WARNING**  
has been designed and manufactured for the specific purpose of  
mounting and demounting tires on to and off of rims.



**Any other use is to be considered incorrect and unreasonable. Purchaser assumes all responsibility for damage resulting from misuse or abuse of this machine.**

### **-Note-**

When first operating this machine, it is suggested that a steel wheel and used tire be used to familiarize yourself with the operation and use of the controls.

## STEP 1

### **Breaking the Bead**

**1] REMOVE ALL WEIGHTS** before servicing any tire. **Weights left on the wheel can cause uneven clamping and may damage wheel and/or machine.**

**Deflate the tire by removing the valve core. Allow ALL AIR TO ESCAPE. DO NOT try breaking the bead until the air has completely deflated from the tire.**



**WARNING ATTEMPTING TO BREAK BEADS ON PARTIALLY WARNING**  
**OR FULLY INFLATED TIRES IS UNSAFE**  
**AND CAN CAUSE HARM TO MACHINE AND/OR OPERATOR.**



### **-Note-**

To prevent damage to the machine and /or wheel, be sure the Turntable Clamps are retracted before operating the Bead Breaker.

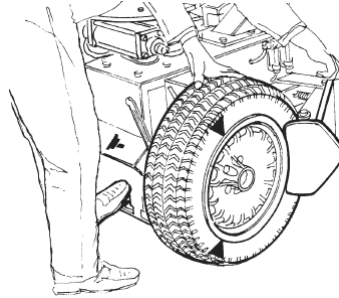
**2] Position the wheel/tire next to the Bead Breaker blade, making sure to first demount the shallowest side of the wheel first.**

**3] With the tire/wheel in position, place the Bead Breaker blade as close to the rim as possible, paying close attention not to contact the sidewall or wheel itself.**

### **-Note-**

If the blade is improperly positioned, damage to the tire or wheel can occur. If the sidewall starts to collapse during the bead breaking process, STOP and reposition the blade.

**4] Depress the Bead Breaker foot-pedal to actuate the blade and loosen the bead. Slowly apply pressure until the bead is unseated from the rim. (Fig. 7)**



(Fig. 7)

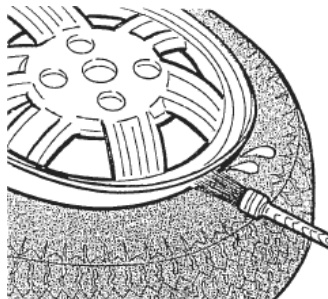
6] Rotate the wheel by 1/3, and repeat the process on the same side of the wheel. Rotate the wheel another 1/3 and repeat the process until the entire bead is loosened from the wheel.

7] Turn the wheel around, and repeat the process on the other side of the wheel.

## STEP TWO

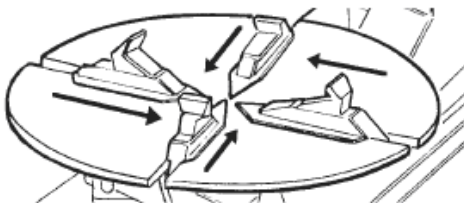
### Clamping Wheel to Turntable

1] Prior to mounting the wheel on the turntable, lube the rim edges and exposed bead area with an approved tire lubricant. Make sure that the brush is clean and that no contaminants come into contact with the bead area. (Fig. 8)



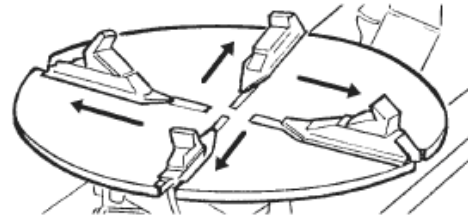
(Fig. 8)

2] To grip the wheel from the inside, depress the clamping foot-pedal and move the clamps inward (Fig. 9). To grip the wheel from the outside, depress the clamping foot-pedal and spread the clamps outward (Fig. 10). Place the wheel/tire on the turntable.



(Move the clamps inward to grip from the inside.)

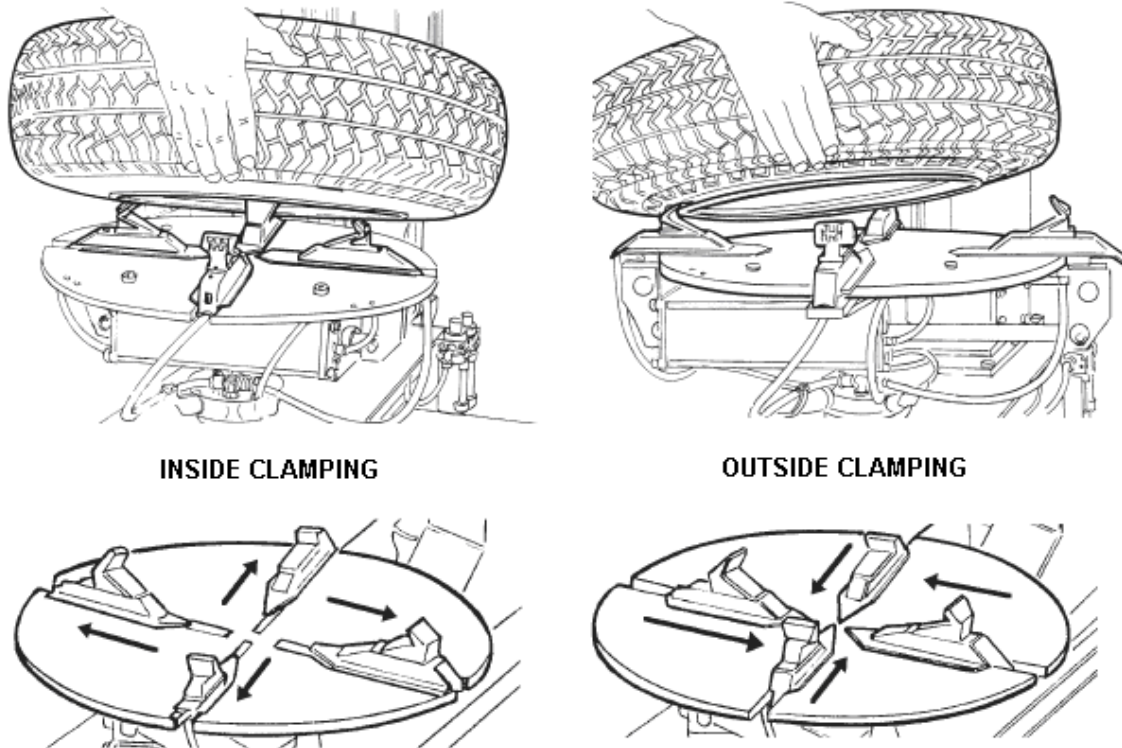
(Fig. 9)



(Spread clamps outward to grip from the outside.)

(Fig. 10)

3] Depress the Clamping foot-pedal to activate the clamps and secure the wheel. (Fig. 11)

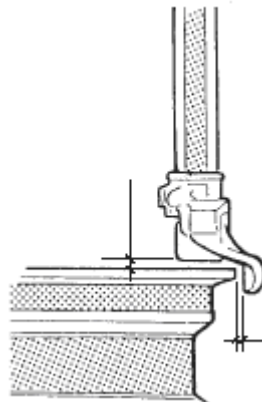


(Fig. 11)

### STEP THREE

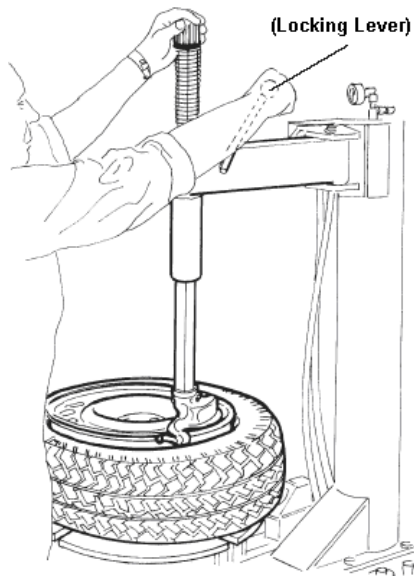
#### **Positioning the Mount/Demount Head**

1] After the wheel is secured to the turntable, pull the overhead Swing Arm into position so that the mount/demount head is directly over the edge of the rim. Pull the vertically sliding Hex Shaft down until the mount/demount head (or "Duckhead") comes into contact with the rim. Turn the Locking Lever to lock the hex shaft into place. As the locking lever is engaged, the mount/demount head will move approximately 1/8" away from the rim's edge.

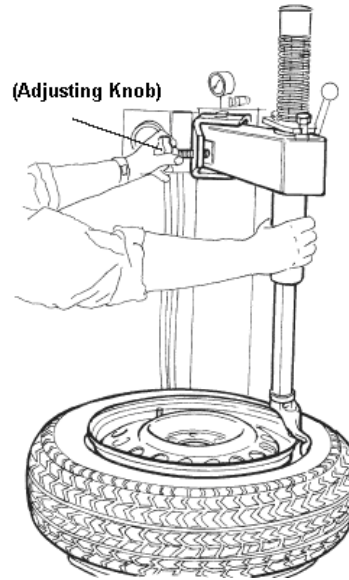


(Fig. 12)

2] The mount/demount head roller that is now making contact with the wheel should be properly positioned 1/8" from the rim edge by turning the swing arm adjusting knob. This setting will be maintained, as long as the Locking Lever and Adjustment Knob are not changed.



(Fig. 13)



(Fig. 14)

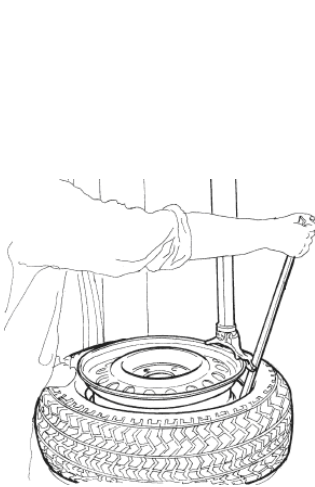
**-Note-**

With the mount/demount head set in the proper position, the operator may move the swing arm in and out of the way without having to reposition the head; so long as the same tires and wheels are being serviced. However, the head should be regularly checked for proper clearance, even when servicing the same tire and wheel combination. Improper clearance can result in damage to wheel and/or tire.

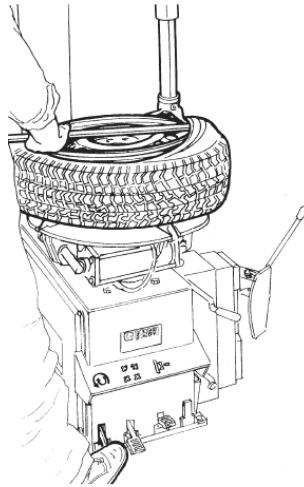
## **STEP FOUR**

### **Removing the Tire**

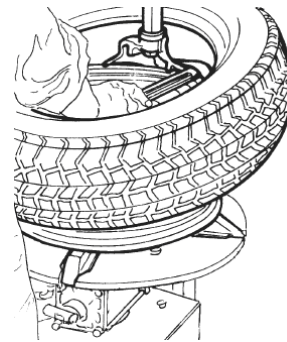
1] Position the bead-lifting bar over the front end of the mount/demount head and insert the smooth, curved end just below the upper bead of the tire. To ease in installation of the tool bar, it helps to use your free hand to press the opposite side of the tire into the dropped center of the wheel. (Fig. 15)



(Fig. 15)



(Fig. 16)



(Fig. 17)

2] With the tool bar (tire iron) in position, push down towards the wheel to lift up the tire bead over the finger portion of the mount/dismount head. Hold the tool bar and bead in this position. Remember to hold the tool bar firmly down on the surface of the wheel. (Fig. 16)

3] Depress the Turntable foot-pedal to rotate the turntable clockwise. The mount/demount head will guide the tire bead over the edge of the wheel as the turntable rotates. It is important that the bead-lifting tool (tire-iron) remains in the down position at this time. Press down on the tire directly across the tool head during this process to force the offside part of the tire into the drop-center portion of the wheel. This will relieve the tension pressure on the tire as it is pulled over the rim edge. Rotate the turntable until the upper bead is completely demounted. (Fig. 17)

4] To demount the lower bead, do not remove the wheel from the turntable. Raise the tire near the tool head while simultaneously forcing the lower bead opposite the tool head down into the dropped center of the wheel. Insert the smooth, curved end of the bead lifting bar just under the lower bead of the tire, and position over the front of the mount/demount head. (Fig. 17)

5] Depress the Turntable foot-pedal to rotate the turntable clockwise. The mount/demount head will guide the tire bead over the edge of the wheel as the turntable rotates. It is important that the bead-lifting tool (tire-iron) remains in the down position at this time.

#### **-Note-**

To reverse the turntable in a counter-clockwise direction, lift up on the turntable foot-pedal.



CAUTION



CAUTION

DURING THE DEMOUNTING PROCEDURE, THE MOUNTING HEAD AND BEAD-LIFTING TOOL MAY ENCOUNTER RESISTANCE AND BECOME OBSTRUCTED. AT THIS TIME IT IS IMPORTANT THAT THE BEAD-LIFTING TOOL IS HELD FIRMLY DOWN. THE BEAD-LIFTING TOOL CAN BE PROPELLED OUTWARD IF RELEASED UNDER PRESSURE. IF THE MOUNT/DEMOUNT HEAD BECOMES JAMMED, CAREFULLY REVERSE THE TURNABLE BY LIFTING UP ON THE FOOT-PEDAL.

## STEP FIVE

### Mounting the Tire

1] Be sure to READ ALL WARNING LABELS and instruction manual prior to operation. Failure to comply with proper safety instructions may lead to serious harm or even death of the operator and/or bystanders. Keep all unnecessary person(s) and bystanders out of the service area.



**WARNING**

**INSPECT ALL TIRES AND RIMS FOR POSSIBLE DEFECTS PRIOR TO MOUNTING.**  
**ALWAYS MAKE SURE TIRE SIZE MATCHES RIM SIZE PRIOR TO MOUNTING.**  
**MISMATCHED TIRES CAN EXPLODE.**



**CAUTION**

BE EXTREMELY CAUTIOUS WHEN MOUNTING ALL TIRES. NEVER MOUNT A TIRE OR TIRE/WHEEL COMBINATION THAT IS HANDED TO YOU BY ANOTHER EMPLOYEE OR CUSTOMER WITHOUT INSPECTING IT THOROUGHLY. DO NOT ATTEMPT TO MOUNT DEFECTIVE TIRES. NEVER MOUNT A TIRE ON A DEFECTIVE RIM.



**WARNING**

**MODULAR WHEELS SHOULD BE INSPECTED CLOSELY**  
**TO MAKE SURE THAT THE CENTER SECTION FASTENERS ARE IN PLACE**  
**AND PROPERLY SECURED PRIOR TO MOUNTING OF TIRE(S).**

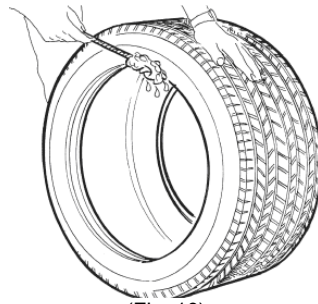


## WARNING

**IF A TIRE BECOMES DAMAGED DURING THE MOUNTING PROCESS,  
DO NOT ATTEMPT TO FINISH MOUNTING.  
REMOVE FROM SERVICE AREA AND PROPERLY MARK THE TIRE AS DAMAGED.**

2] Inspect all wheels closely for damage and/or defects prior to mounting tire. Remove any burrs and light corrosion with a wire brush or small file. DO NOT ATTEMPT TO SERVICE HEAVILY CORRODED WHEELS. Clean bead area thoroughly.

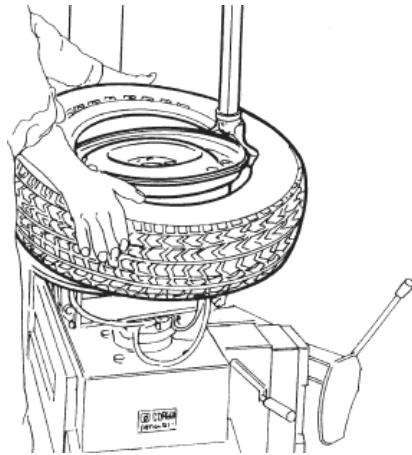
3] Inspect all tires for damage and/or defects. Pay close attention to sidewall and bead areas. ALWAYS MAKE SURE TIRE SIZE MATCHES RIM SIZE prior to mounting. DO NOT ATTEMPT TO MOUNT DEFECTIVE TIRES. Clean bead area thoroughly. After cleaning and inspecting the bead area, lubricate both beads thoroughly with clean soap/lube. (Fig. 18)



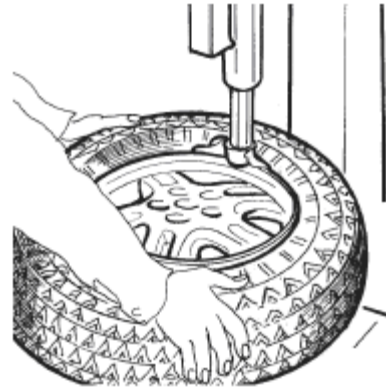
(Fig. 18)

4] Place the wheel on the turntable, following the procedures outlined in STEP TWO (above). Move the swing arm into position so that the mount/demount head is properly positioned within 1/8" - 3/16" from both the top and side of the wheel. Place the tire over the wheel at an angle, so that the lower bead is resting on top of the rear extension of the mount/demount head and below the front extension.

5] Depress the turntable foot-pedal to rotate the table and guide the lower bead down over the edge of the wheel. To ease in the installation, continue forcing the bead of the tire into the drop-center portion of the wheel during the mounting process. Slowly rotate the turntable until the lower bead is completely mounted. (Fig. 19)



(Fig. 19)



(Fig. 20)

6] To mount the top bead, rotate the turntable so that the valve stem is located directly across from the mount/demount head (or at the 7-o'clock position). Lift the upper bead over the rear extension of the mount/demount head and below the front extension. To ease installation, continue forcing the bead of the tire into the drop-center portion of the wheel during the mounting process. Slowly rotate the turntable until the upper bead is completely mounted. (Fig. 20)

**-Note-**

During the mounting procedure, the mounting head may encounter resistance and become jammed. If the turntable stalls, slowly reverse the turntable rotation by lifting up on the foot-pedal. Reposition the tire and mounting head, then continue.

7] Release Hex Shaft Locking-Lever and move Swing Arm away from the Turntable.

## **STEP SIX**

### **Inflating the Tire**

1] Be sure to READ ALL WARNING LABELS and instruction manual prior to inflation of tire. Failure to comply with proper safety instructions may lead to serious harm or even death of the operator and/or bystanders. Keep all unnecessary person(s) and bystanders out of the service area.



**DANGER**

THIS MACHINE IS NOT INTENDED TO BE A RESTRAINING DEVICE FOR EXPLODING TIRES, TUBES OR RIMS. **KEEP HANDS AND BODY CLEAR** AT ALL TIMES AND AS FAR BACK AS POSSIBLE DURING INFLATION. **DO NOT** LEAN OVER THE TIRE WHILE INFLATING. AN EXPLODING TIRE, RIM OR OTHER WHEEL COMPONENTS CAN CAUSE DEATH TO THE OPERATOR AND/OR BYSTANDER. **REMAIN CLEAR AT ALL TIMES.**





## WARNING

**WHILE SEATING BEADS, NEVER EXCEED 40/PSI.  
IF BEAD DOES NOT SEAT AT 40/PSI, IMMEDIATELY RELIEVE PRESSURE AND CHECK  
FOR DAMAGED BEAD AND/OR OTHER CAUSE.  
NEVER EXCEED THE FACTORY RECOMMENDED AIR PRESSURE OF A TIRE.  
OVER INFLATING A TIRE BRYOND THE MANUFACTURER'S RECOMMENDATION CAN  
CAUSE TIRE TO BURST OR EXPLODE.**

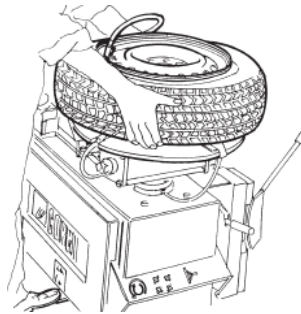
2] Connect the inflation hose to the tire valve stem, making sure that the hose clip is properly secured.



## DANGER

**DO NOT** INFLATE THE TIRE WITH ANY AIR HOSE OTHER THAN THE INFLATION HOSE ON THE MACHINE.

3] Hold the tire up, to position the upper bead against the edge of the rim. Make sure the top bead clears the bottom of the valve stem, to prevent air from escaping during inflation. (Fig. 21)



(Fig. 21)

4] Depress the Inflation foot-pedal halfway to begin inflating the tire. If necessary, depress the foot-pedal down completely (activating the "Jet-Blast") for one second, to assist in seating the lower bead. Return the pedal to the half-way position to continue inflating the tire. (Fig. 22)



(Fig. 22)



## CAUTION

**DO NOT DEPRESS THE "JET-BLAST" INFLATION PEDAL UNLESS A TIRE/WHEEL IS IN PLACE ON THE TURNTABLE. IF THE "JET-BLAST" INFLATION FOOT-PEDAL IS DEPRESSED WITHOUT A TIRE/WHEEL IN PLACE, DIRT OR OTHER DEBRIS COULD BE BLOWN UPWARD WITH EXTREME PRESSURE CAUSING INJURY TO THE OPERATOR OR BYSTANDERS.**

### **-Note-**

If the bead refuses to seal after one or more attempts, you may wish to remove the valve stem core to assist in the bead sealing process. Once the bead is seated, remove the inflation hose and re-install the valve stem core.

**5] Once the bead is sealed and the tire begins to inflate, step away. During the bead seating and inflation process STAND BACK AND KEEP HANDS AND ENTIRE BODY CLEAR.**



## DANGER

**KEEP HANDS AND BODY CLEAR** AT ALL TIMES AND AS FAR BACK AS POSSIBLE DURING INFLATION. DO NOT LEAN OVER THE TIRE WHILE INFLATING. AN EXPLODING TIRE, RIM OR OTHER WHEEL COMPONENT CAN CAUSE DEATH TO OPERATOR AND/OR BYSTANDER. **REMAIN CLEAR AT ALL TIMES.**

**6] As the pressure in the tire increases, the beads will move outward on the wheel and "pop" when they seat completely. If the beads refuse to seat during inflation, relieve the pressure immediately and check for possible causes.**



## DANGER

**WHILE SEATING BEADS, NEVER EXCEED 40/PSI. IF BEAD DOES NOT SEAT AT 40/PSI IMMEDIATELY RELIEVE PRESSURE AND CHECK FOR DAMAGED BEAD AND/OR OTHER CAUSE.**

**7] Continue to depress the Inflation foot-pedal half-way until the desired air pressure is shown on the pressure gauge.**

**-Note-**

To release air pressure with the inflation hose attached to the tire, press the pressure release valve button on the Inflation Box.



**DANGER**

**NEVER EXCEED** THE FACTORY RECOMMENDED AIR PRESSURE OF TIRE. OVER INFLATING TIRE BEYOND THE MANUFACTURER'S RECOMMENDATIO CAN CAUSE THE TIRE TO BURST OR EXPLODE.

**-Note-**

Air supply to machine must be between 120/psi and 145/psi to operate properly.

# **TROUBLE-SHOOTING**

## **MOUNT HEAD SCRATCHES RIMS**

- 1] Rim not mounted properly.
- 2] Mount-head is not adjusted properly.
- 3] Locking-plate is not adjusted properly.
- 4] Bent or damaged parts.

## **AIR LEAKS**

- 1] Isolate leak.
- 2] Check regulator for proper air flow.
- 3] Check tubing, fittings or components for leaks; and replace as applicable.
- 4] Air continuously leaks through clamps: Bad pedal valve or bad distributor valve.

## **PEDAL PROBLEMS**

- 1] Broken pedal: Replace
- 2] Pedal does not operate: Broken or disconnected: inspect, and replace if necessary.
- 3] Pedal sticks: Broken spring, linkage or defective valve: inspect, and replace if necessary.

## **INFLATION ISSUES**

- 1] Air continuously leaks through clamps: Bad pedal valve or bad distributor valve.
- 2] Not enough pressure: Check air pressure at regulator.
- 3] Will not inflate tire:
- 4] Will not seat bead:

## **BEAD-BREAKING ISSUES**

- 1] Insufficient force to break bead: Check for air pressure, crimps in tubing or leaks.
- 2] Bead breaker is slow: Verify oil in lubricator.
- 3] Will not release tire: Check for air obstruction, or damaged cylinder.

## **CLAMPING ISSUES**

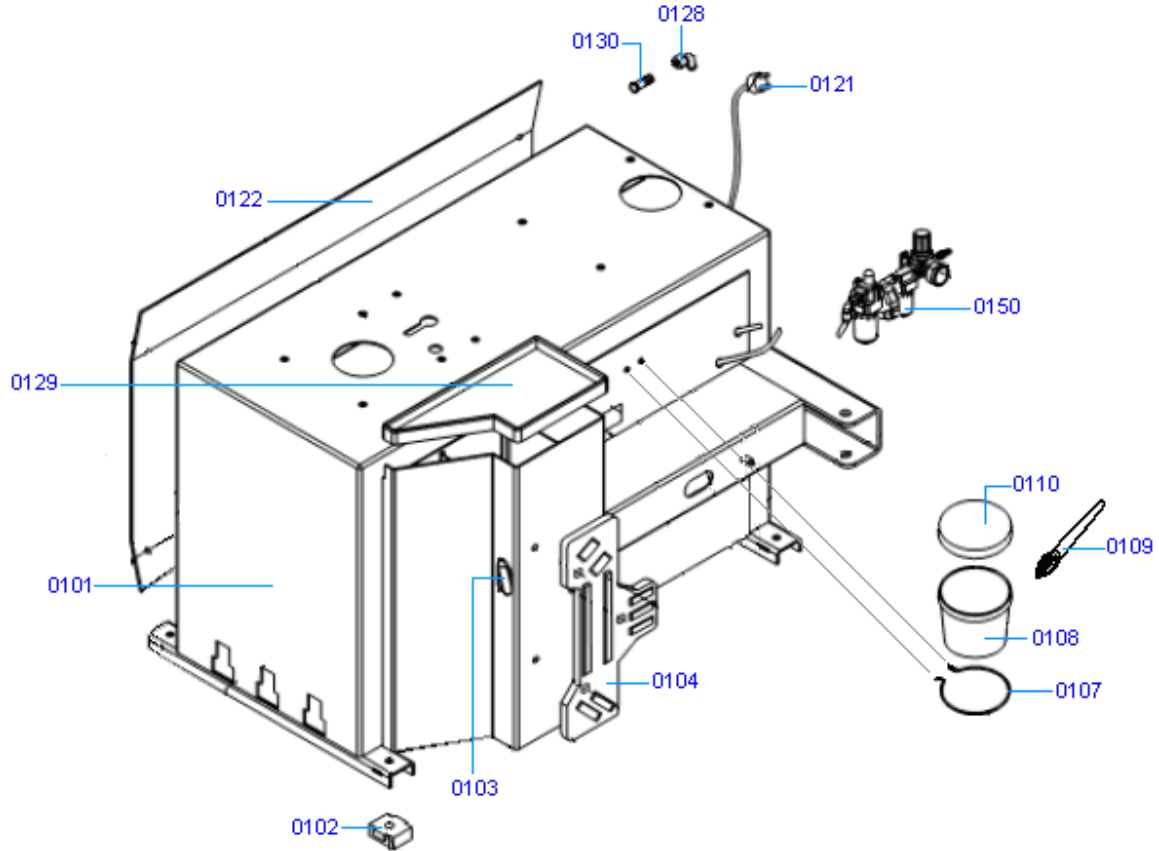
- 1] Clamps do not move.
- 2] Clamps move in, but not out.
- 3] Clamps move in, then out on their own.
- 4] Clamps move out, and stay out: Bad rotary valve.

## **TURNTABLE ISSUES**

- 1] Table only turns in one direction: Check Cam switch.
- 2] Motor hums or pops breaker: Check cam switch and motor; replace if necessary.
- 3] Does not turn at all: Check belt, power, transmission or wiring, correct as necessary.
- 4] Turns in one direction only: Check wiring and switch, and linkage on pedal: replace or correct.

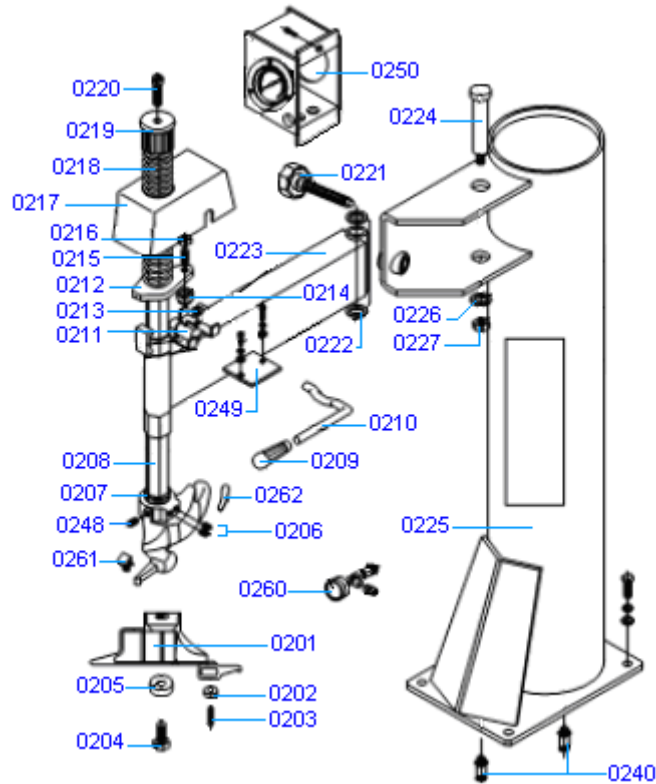
# PARTS LISTING

## Chassis Assembly



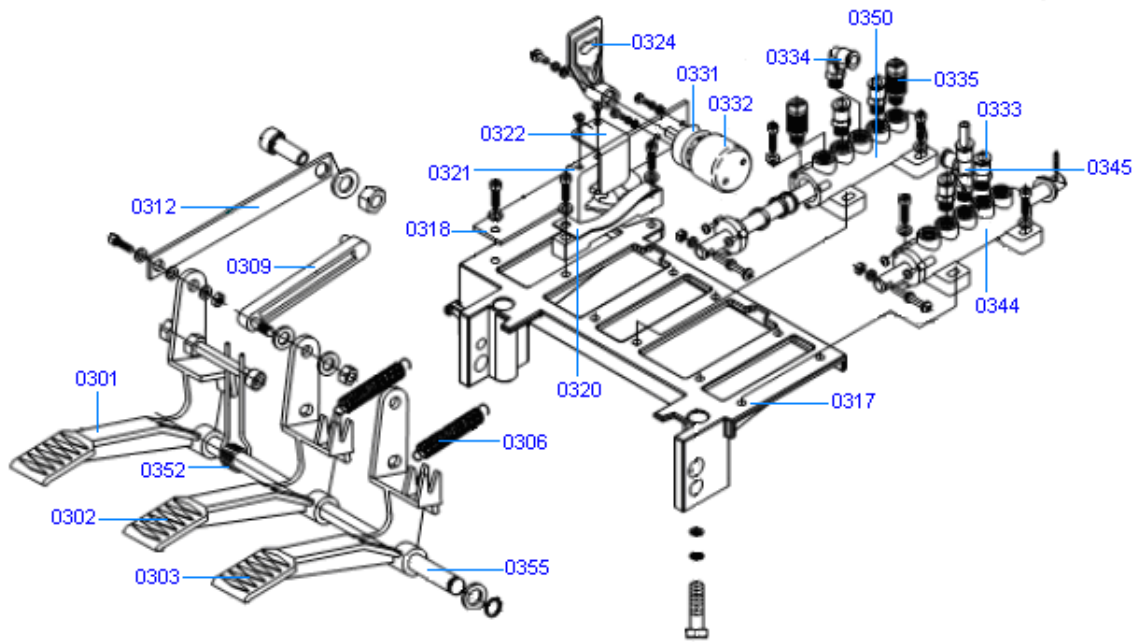
0101	Cabinet	0110	Soap Bucket Lid
0102	Rubber Foot	0121	Cord/Plug
0103	Tire Iron (Bead-Lifting Bar)	0122	Side Panel
0104	Bead Breaker Pad	0128	Elbow Fitting (Back Panel)
0107	Soap Bucket Ring	0129	Plastic Tray
0108	Soap Bucket	0130	Straight Fitting/Adapter
0109	Brush	0150	Regulator Assembly

## Tower Assembly



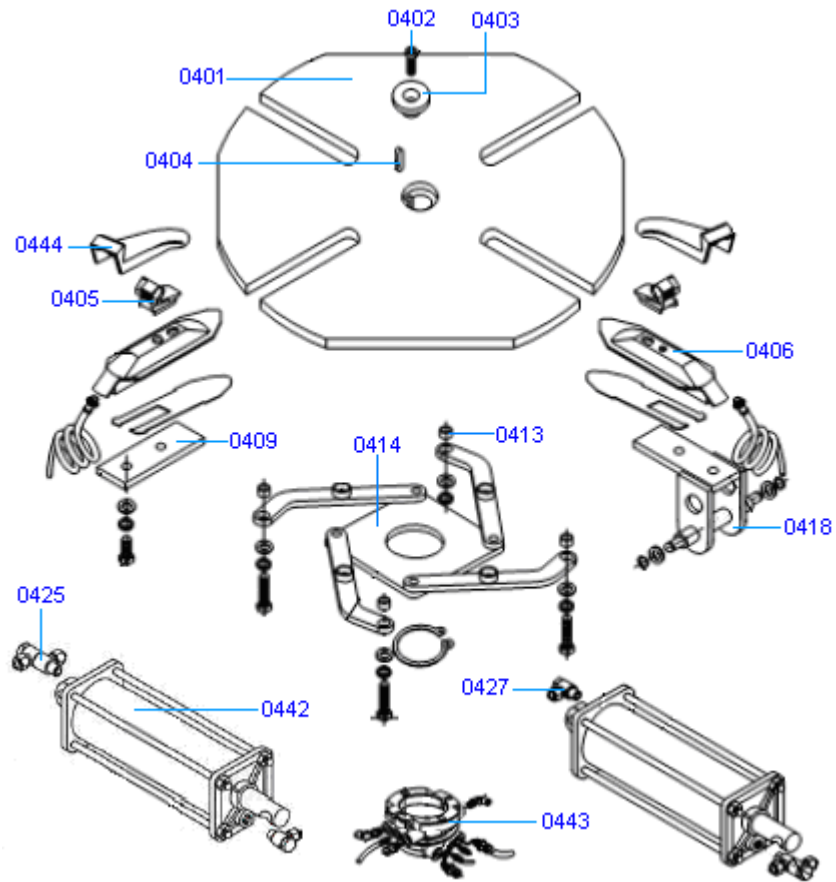
0201	Mount Head ("Duckhead")	0221	Swing Arm Adjusting Knob
0202	Roller	0222	Washer
0203	Roller Set Screw	0223	Swing Arm
0204	Mount Head Bolt	0224	Swing Arm Pin
0205	Washer	0225	Tower (Air Tank)
0206	Mount Head Set Screw	0226	Washer
0207	Rubber Washer	0227	Nut
0208	Hex Shaft	0240	Tower Connector
0209	Locking Lever Knob	0248	Mt. Head Set Screw (Small)
0210	Locking Lever	0249	Lower Lock Plate
0211	Plank	0250	Inflation Box
0212	Lock Plate	0260	Tower Gauge
0213	Mat Screw	0261	Mount Head Insert (Front)
0214	Mat	0262	Mount Head Insert (Back)
0215	Adjusting Screw		
0216	Adjusting Nut		
0217	Plastic Cover		
0218	Spring		
0219	Cap		
0220	Cap Bolt		

## Pedal Assembly



0301	Turntable Pedal	0334	Elbow Fitting
0302	Clamping Pedal	0335	Muffler/Silencer
0303	Bead Breaker Pedal	0344	Bead Breaker Spool Valve
0306	Pedal Spring	0350	Clamping Spool Valve
0309	Cam Follower	0351	Switch Harness
0312	Cam Connecting Rod	0352	Cam Pedal Spring
0317	Pedal Bracket	0355	Pedal Shaft
0318	Support Plate		
0320	Fork Leaf Spring		
0321	Cam		
0322	Curved Plate		
0324	Cam Switch Handle		
0331	Cam Switch		
0332	Rubber Cover		
0333	Straight Fitting		

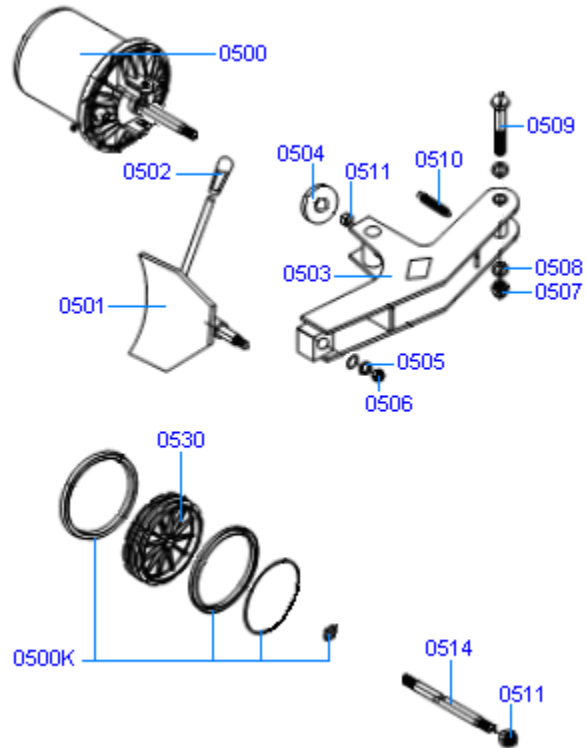
## Turntable Assembly



0401	Table Top	0427	Single-Fitting Banjo Bolt
0402	Bolt	0442	Air Cylinder
0403	Cap/Cover	0443	Rotary Joint/Valve
0404	Retaining Key	0444	Plastic Jaw Protector
0405	Clamp/Jaw		
0406	Slide		
0409	Slide Guide		
0413	Bushing		
0414	Connecting Plate ("Spider")		
0425	Dual-Fitting Banjo Bolt		

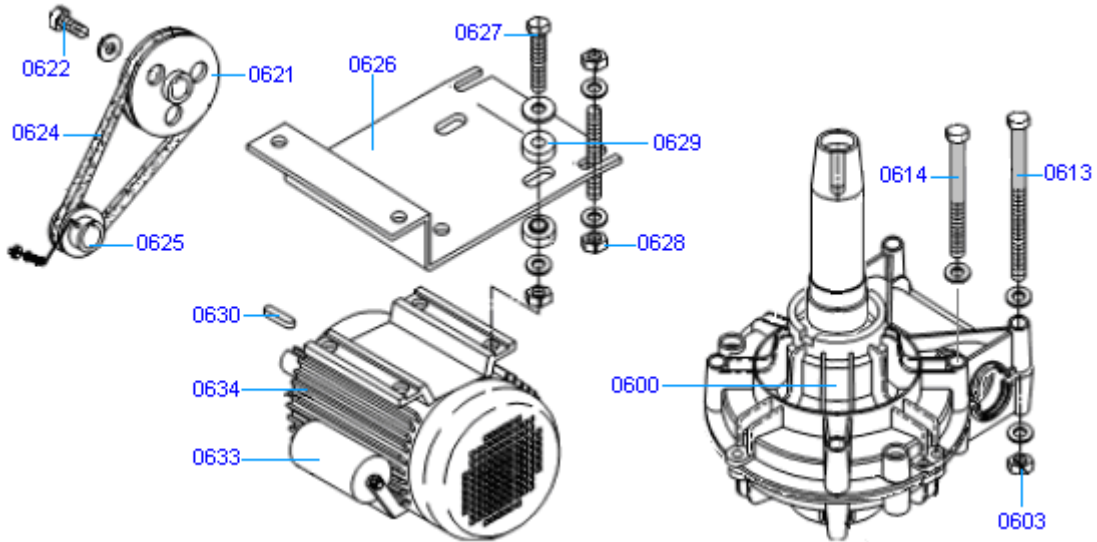


## Bead-breaker Assembly



0500	Bead Breaker Cylinder	0510	Spring
0501	Blade	0511	Nut (Piston Rod)
0502	Handle Knob	0514	Piston Rod
0503	Bead Breaker Arm	0530	Piston
0504	Large Washer	0500K	Cylinder Seal Kit
0505	Washer (Blade)		
0506	Nut (Blade)		
0507	Nut (Arm Bolt)		
0508	Washer (Arm Bolt)		
0509	Arm Bolt		

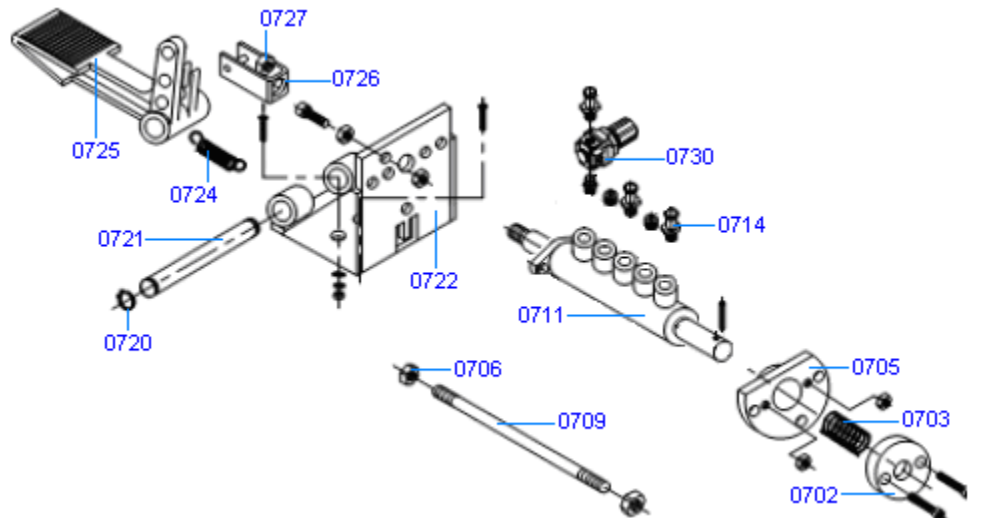
## Motor & Transmission Assemblies



0600	Transmission Assembly
0603	Nut
0613	Long Bolt
0614	Short Bolt
0621	Large Pulley
0622	Pulley Bolt
0624	Belt
0625	Small Pulley (Motor)

0626	Motor Support
0627	Motor Support Bolt
0628	Motor Support Nut
0629	Spacer
0630	Retaining Pin (Key)
0633	Capacitor
0634	Motor (110v)

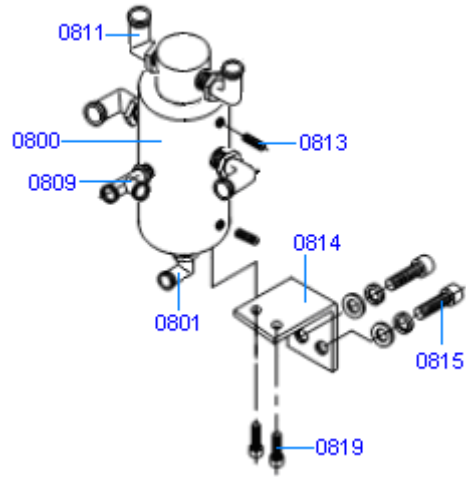
## Inflation Pedal Assembly



0702	Moving Table
0703	Spring
0705	Fixed Table
0706	Nut
0709	Support Rod
0711	Spool Valve
0714	Straight Fitting/Connector
0720	C-Clip

0721	Pedal Shaft
0722	Pedal Bracket
0724	Pedal Spring
0725A	Pedal
0726	Connector
0727	Adjusting Nut
0730	Regulator

## Distributor Valve Assembly



0800  
0801  
0809  
0811

Distributor Valve  
Elbow Fitting (Small)  
T-Fitting  
Elbow Fitting (Large)

0813  
0814  
0815  
0819

Set-Screw  
Mounting Bracket  
Screw (Large)  
Screw (Small)





### **Eagle Tire Equipment Warranty**

Eagle Equipment warrants to the original retail purchaser of an Eagle Global Tire Changer or Wheel Balancer that it will replace without charge any part found under normal use, in the United States or Canada, to be defective in materials or workmanship, **for a period of one (1) year from date of purchase**. Warranty covers parts only; purchaser is responsible for any and all labor requirements.

#### **Exclusions**

This warranty will not apply to any machine:

1. Which has not been operated or maintained according to specifications
2. Which has been abused, misused, altered or improperly maintained
3. Which has been improperly installed or assembled

#### **Other limitations**

This warranty does not cover:

1. Parts needed for normal maintenance
2. Wear parts, which include but are not limited to, speed-nuts, cones, mount heads, and inserts
3. On-site labor

Eagle Equipment reserves the right to make improvements and/or design changes to its equipment without any obligation to previously sold, assembled or fabricated equipment.

There is no other express warranty on the Eagle Global Series equipment and this warranty is exclusive of and in lieu of all other warranties, expressed or implied, including all warranties of merchantability and fitness for a particular purpose.

To the fullest extent allowed by law, Eagle Equipment shall not be liable for loss of use, inconvenience, lost time, commercial loss or other incidental or consequential damages.

Some States do not allow exclusion or limitation of consequential damages or how long an implied warranty lasts, so that the above limitations and exclusions may not apply. This warranty gives you specific legal rights and you may have other rights, which may vary from State to State.



**Eagle Equipment**, a division of **Standard Tools and Equipment Co.**, is a leading distributor of automotive repair and garage service equipment. Established in 1954, Eagle has provided quality equipment at competitive prices for 60 years, carrying a full line of automotive lifts: two-post lifts, four-post lifts, alignment lifts, scissors lifts, low-rise and mid-rise lifts, as well as models of movable service/storage lifts and our **MOBILEMAN**<sup>®</sup>. We also stock wheel service equipment including: wheel balancers, tire changers, and brake lathes. We offer a full line of parts, as well as technical support.

Visit us at: [www.eagleequip.com](http://www.eagleequip.com)



**Established in 1979** to service the auto body and collision repair industry, **Tools USA** is operated by Standard Tools and Equipment Co., offering a wide variety of products for the auto body professional, collision shops and car hobbyist including auto lifts, frame machines, pulling posts, tire equipment, painting accessories, powder coating equipment, sandblasting equipment, paint booths and more. One of the largest paint booth manufacturers in the United States, Tools USA takes pride in building standard and custom engineered paint booths for all types of applications.

Visit us at: [www.toolsusa.com](http://www.toolsusa.com)



**Delivering Excellence to the Automotive and Painting Industries.  
Every Product. Every Customer. Every Day.**

**Standard Tools and Equipment Co. was founded in 1996** to provide tools and equipment to the automotive aftermarket industry. They began manufacturing paint booth systems in 1997. Having built over 10,000 paint spray booths for various industries, Standard Tools is among the country's largest suppliers. Tools USA was acquired in 1996 and became a part of the Standard Tools and Equipment family of brands. In 2005, Eagle Equipment, a 50-year-old company joined Standard Tools to provide automotive lifts and tire equipment to the repair industry.